



CustomControlSensors

**Dual Snap®**  
Pressure, Temperature and Liquid Flow

www.ccsdualsnap.com

## CCS Hazardous Area Products

### Functions:

- . Safety (Alarm / Shutdown)
- . Monitor
- . Control

### Features & Benefits:

1. Proven reliable technology
  - . Non-trace design - Pioneer in negative rate disc-spring technology
  - . **DUAL-SNAP®**, millisecond snap-acting technology
  - . Aerospace pedigree
2. Rugged, stable, highly accurate and repeatable
  - . Impervious to harsh, critical environments
  - . Weather-proof, explosion-proof
  - . Shock and vibration resistant up to 20 G's
  - . Unaffected by pump ripple and surges
  - . Non-drifting set points and a fixed deadband
  - . Precision control
3. Superior economic value
  - . Low cost of ownership
  - . Fit and forget - Never needs calibration
  - . Maintenance free

### Hazardous Areas Certifications:

- . UL/cUL
- . ATEX
- . CCC
- . CE
- . CRN
- . CSA
- . Dual Seal
- . EAC
- . NACE/NEMA



Custom Control Sensors, LLC (CCS) is a global leader in the design, testing, manufacturing and supply of pressure, temperature and liquid flow switches and sensors for the Industrial, Energy, Aerospace and Defense markets. Founded in 1957, CCS revolutionized the pressure switch market by utilizing its patented Dual-Snap® disc spring technology.

Originally developed for critical aerospace applications, the Dual-Snap disc spring eliminates contact chatter and erroneous electrical signals associated with trace type pressure switch devices due to vibration, shock and high temperature conditions. As a result, CCS industrial pressure and temperature switch products are the industry standard and used in essential equipment alarm, monitoring and control functions all over the globe.

CCS' Quality Policy is to pursue perfection through continual improvement of its products and services. This requires a personal commitment from every employee to understand and consistently meet or exceed customer requirements. To achieve this objective, Custom Control Sensors recognizes that it is essential to train, develop and promote the concept of continual improvement to the greatest extent possible so that every product or service is delivered defect-free and on time.

## Test of Time Solutions.

United States Office  
21111 Plummer Street  
Chatsworth, California 91311  
Tel: +1 818.341.4610  
switchnet@ccsdualsnap.com



### Exploration

Oil Platform  
Pump Jack



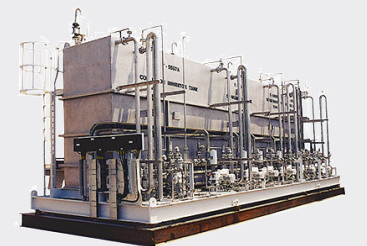
### Refining

Refinery  
Control / Annunciator Panel  
Relay Alarm System



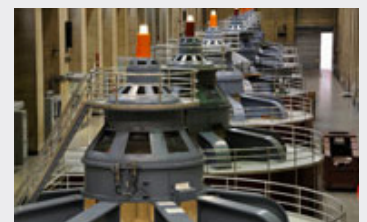
### Transportation

Pipelines  
Pump Control



### Wellhead Skid

Hydraulic Systems



### Power Generation

Turbines  
Filtration



CustomControlSensors

**Dual Snap®**

Pressure, Temperature and Liquid Flow

[www.ccsdualsnap.com](http://www.ccsdualsnap.com)

**Gage 6900GE / 6900PE**  
**Differential 6900DZE**

• Diaphragm Sensor • Piston Sensor

- **Adjustable Range:**  
0.4-16,000 PSI  
0.028-1,103 BAR  
2.76-110,316 kPa
- **Proof Pressures up to:**  
25,000 PSIG  
1,724 BAR  
172,369 kPa
- **Weight: 16-49 ounces (467-1372 grams)**



**Gage 6900GZEY-7106 / 6900PZEY-7106**  
**Differential 6900DZEY-7106 /**  
**All Stainless, ATEX Approved**

• Diaphragm Sensor • Piston Sensor

- **Adjustable Range:**  
0.5-16,000 PSI  
0.028-1,103 BAR  
3.45-110,316 kPa
- **Proof Pressures up to:**  
25,000 PSIG  
1,724 BAR  
172,369 kPa
- **Weight: 25-49 ounces (709-1389 grams)**



**Gage 6900GCZZE5Y / 6900PZZE5Y**  
**All Stainless**

• Diaphragm Sensor • Piston Sensor

- **Adjustable Range:**  
1-16,000 PSI  
0.07-1,103 BAR  
6.89-110,316 kPa
- **Proof Pressures up to:**  
25,000 PSIG  
1,724 BAR  
172,369 kPa
- **Weight: 16-25 ounces (467-708 grams)**



**Gage 611GE**  
**Vacuum 611VE**

• Diaphragm Sensor

- **Adjustable Range:**  
28.5" Hg Vacuum-180 PSIG  
724 mm Hg-12.4 BAR  
96.5-1241 kPa
- **Proof Pressures up to:**  
1000 PSIG  
68.9 BAR  
6895 kPa
- **Weight: 10-20 ounces (283-567 grams)**



**Differential 672DE / 673DE**

• Diaphragm Sensor

- **Adjustable Range:**  
2-150 PSID  
0.14-10.3 BAR  
13.79-1034 kPa
- **Proof Pressures up to:**  
4500 PSIG  
310 BAR  
31,026 kPa
- **Weight: 67 ounces (1876 grams)**



**Gage 675GES / 675GES800**  
**Differential 675DES / 675DES800**  
**Vacuum 675VES / 675VES800**

• Diaphragm Sensor

- **Adjustable Range:**  
0.7-31" H2O  
1.7-77.2 mBAR  
0.17-7.72 kPa
- **Proof Pressures up to:**  
15 PSIG  
1034 mBAR  
103.4 kPa
- **Weight: 22 ounces (624 grams)**



**Gage 646GE - Differential 646DZE / 646DCE**  
**Vacuum 646VE - Crossover 646GVE**

• Diaphragm Sensor

- **Adjustable Range:**  
28.5" Hg Vacuum-5000 PSIG  
724 mm Hg-345 BAR  
96.5-34,500 kPa
- **Proof Pressures up to:**  
7,500 PSIG  
517 BAR  
51,700 kPa
- **Weight: 60 ounces (1700 grams)**



**Temperature (Probe) 646TE**  
**Temperature (Capillary) 646TUE**

• Diaphragm Sensor

- **Adjustable Range:**  
-39 deg F to +630 deg F  
-39 deg C to +332 deg C
- **Maximum Probe Temperature up to +650 deg F**  
(+343 deg C)
- **Weight: 68-71 ounces (1928-2013 grams)**



**Temperature (Probe) 6900TE**  
**Temperature (Capillary) 6900TUE**

• Diaphragm Sensor

- **Adjustable Range:**  
0 deg F to +650 deg F  
-18 deg C to +340 deg C
- **Maximum Probe Temperature up to +700 deg F**  
(+371 deg C)
- **Weight: 32 ounces (907 grams)**



**Temperature (Probe) 6900TE-7106**  
**Temperature (Capillary) 6900TUE-7106**  
**All Stainless, ATEX Approved**

• Diaphragm Sensor

- **Adjustable Range:**  
0 deg F to +650 deg F  
-18 deg C to +343 deg C
- **Maximum Probe Temperature up to +700 deg F**  
(+371 deg C)
- **Weight: 35 ounces (992 grams)**

