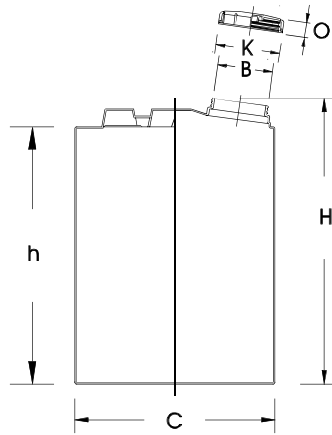


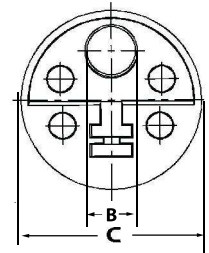
CEN-B



TISI 1379-2551



Top View



Part Number	Capacity (Liters)	Tank					Lid				Approx. Total Weight (kg)	
		Approx. Dimensions (mm.)					Part Number	Approx. Dimensions (mm.)				
		B	C	H	h	Thk.			K	O	Thk.	
CEN050B-M114	50	150	380	550	480	3.5	CT0150B-HX29	150	40	2.0	3.18	
CEN050B-M4X6						4.0						3.68
CEN050B-M115						5.0						4.18
CEN050B-M116						6.0						5.18
CEN100B-M5X6	100	150	500	660	575	3.5	CT0150B-HX29	150	40	2.0	4.68	
CEN100B-M116						4.0					5.18	
CEN100B-M118						5.5					7.18	
CEN100B-M0X6						7.5					9.68	
CEN200B-M118	200	150	650	750	670	3.5	CT0150B-HX29	150	40	2.0	7.18	
CEN200B-M119						4.0					8.18	
CEN200B-M123						6.0					12.18	
CEN200B-M126						7.5					15.18	
CEN300B-M122	300	150	650	1,050	970	4.0	CT0150B-HX29	150	40	2.0	11.18	
CEN300B-M124						5.0					13.18	
CEN300B-M126						5.5					15.18	
CEN300B-M131						7.5					20.18	
CEN500B-M127	500	395	870	1,040	915	4.5	CT0395A-M1X8	395	90	3.0	16.7	
CEN500B-M129						5.0					18.7	
CEN500B-M131						5.5					20.7	
CEN500B-M138						7.5					27.7	
CEN1K0B-M141	1,000	395	1,030	1,540	1,390	5.0	CT0395A-M1X8	395	90	3.0	30.7	
CEN1K0B-M144						5.5					33.7	
CEN1K0B-M156						7.5					45.7	
CEN1K0B-M168						9.5					57.7	
CEN1K0B-M171						10.0					60.7	
CEN1K5B-M154	1,500	395	1,300	1,430	1,280	5.5	CT0395A-M1X8	395	90	3.0	43.7	
CEN1K5B-M158						6.0					47.7	
CEN1K5B-M166						7.0					55.7	
CEN1K5B-M180						10.0					79.7	
CEN2K0B-M167	2,000	395	1,300	1,800	1,650	6.0	CT0395A-M1X8	395	90	3.0	56.7	
CEN2K0B-M177						7.0					66.7	
CEN2K0B-M186						8.0					75.7	
CEN2K0B-M105						10.0					94.7	
CEN2K5B-M173	2,500	395	1,300	2,050	1,900	6.0	CT0395A-M1X8	395	90	3.0	680.0	
CEN2K5B-M184						7.0					780.0	
CEN2K5B-M194						8.0					870.0	
CEN2K5B-M211						10.0					970.0	

NOTE: 1. Prices are exclusive of 7% VAT and subject to change without prior notice.