



Cos Kim det BT1.25

Size dây $0.25\text{mm}^2 \sim 1.65\text{mm}^2$



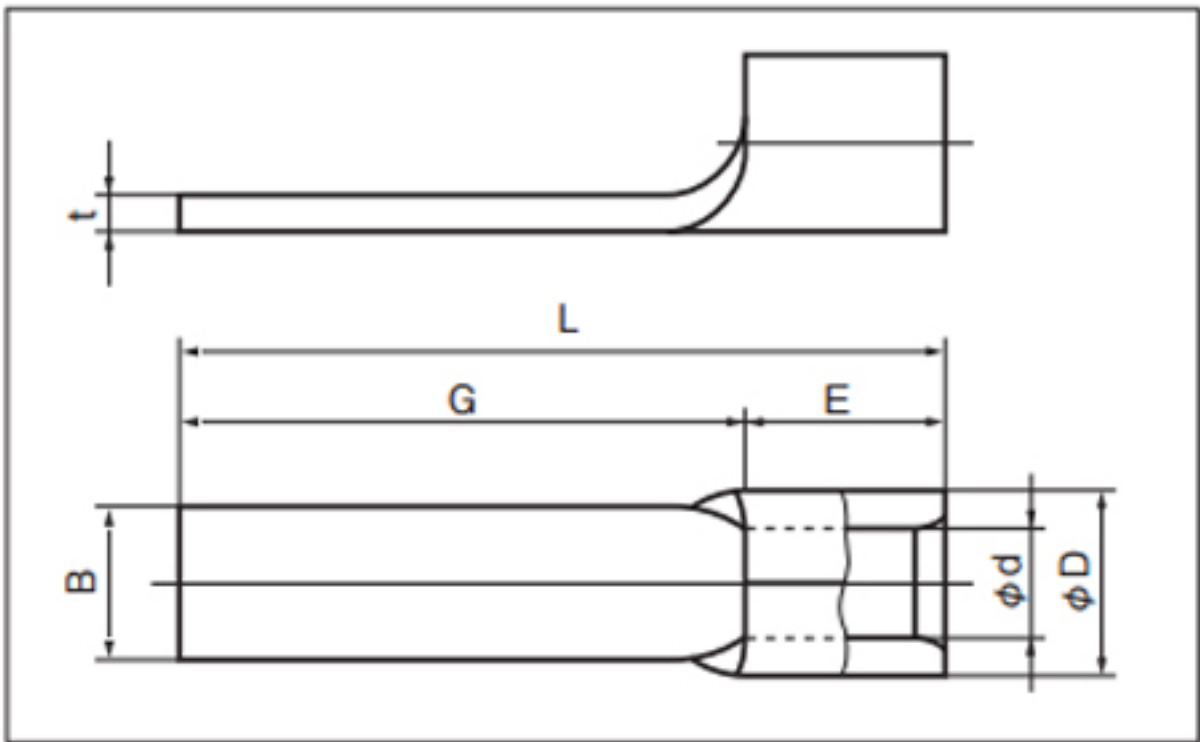
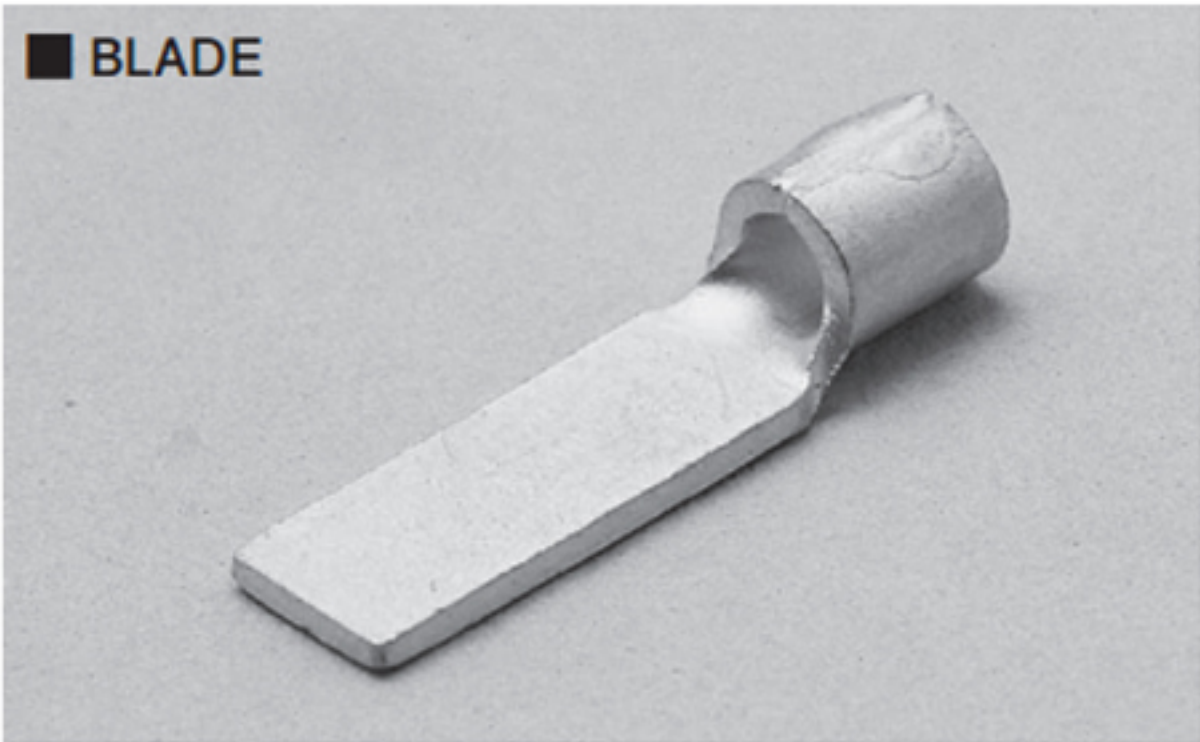
ĐẦU CỐT (COSSE) BT1.25 NICHIFU NHẬT BẢN

Thông số kỹ thuật

BLADE TERMINALS (BT TYPE)



RoHS10
See page 2



PART NUMBER	DIMENSIONS mm							WIRE RANGE			TOOL No.		STD QTY/BOX								
	B	t	L	G	E	ϕD	ϕd	SOLID mm	STRANDED mm ²	AWG	HAND TOOL No.										
											TOOL BODY No.	DIES No.									
BT 1.25-7.5	1.0	0.75	15.5	11.0	4.5	3.4	1.7	0.57 1.44	0.25 1.65	22-16	NH 1 NH 69		1,000 (100×10)								
BT 1.25-9-1	2.2		13.5	9.0																	
BT 1.25-9	2.8		13.6	9.1																	
BT 1.25-10-1	2.2		15.0	10.5																	
BT 1.25-10	3.4		14.8	10.3																	
BT 1.25-11	3.0		15.7	11.2																	
BT 1.25-13	3.4		17.5	13.0																	
BT 1.25-13-1	2.2		19.1	14.6							NA 10 NA 3			N10 01 N3 7							
BT 1.25-14	3.0																				
BT 1.25-18	2.2																				

- NOTE
- 1) ○ : UL, CSA △ : UL
 - 2) Refer to page 14 for UL/CSA and proper strip length of wire.
 - 3) BT 1.25-7.5 : Due to narrow blade width, specifications differ from other blade terminals.