

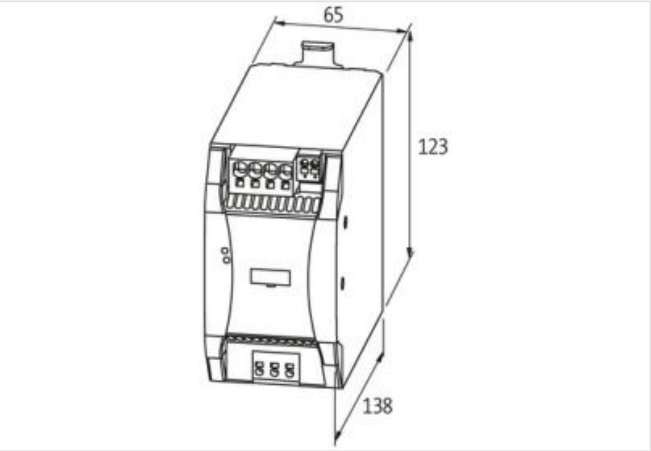
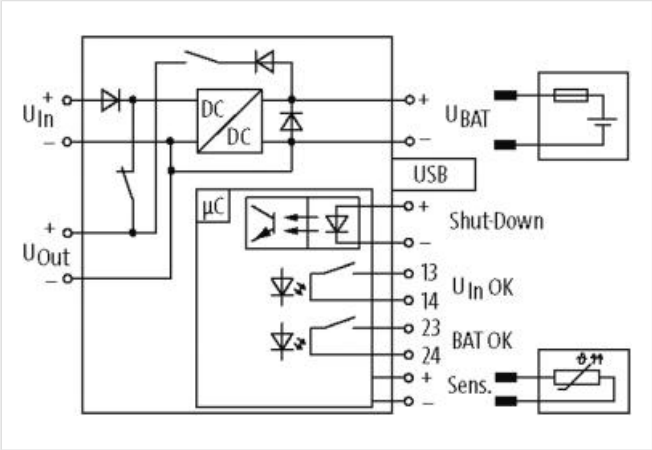
Emparro ACCUcontrol UPS-Module

IN: 24VDC OUT: 24VDC/20A

INPUT: 24 V DC (SELV/PELV)  
OUTPUT: max. 20 A

Link to Product

Illustration



Product may differ from Image



| Input           |                                   |
|-----------------|-----------------------------------|
| Input voltage   | 21.6...30 V DC (buffer operation) |
| Loading current | 2 A                               |
| Input current   | max. 23 A                         |
| Output          |                                   |
| Output voltage  | 27.7...19.2 V DC                  |
| Output current  | max. 20 A                         |
| Technical Data  |                                   |

|                             |  |
|-----------------------------|--|
| Sensor type                 | KTY 81-210 (Art.No. 89600)                     |
| Battery type                | Lead battery (max. 40 Ah, sealed)              |
| <b>Control inputs</b>       |  |
| Input voltage shutdown (SH) | 24 V DC (6...45 V DC), potential free          |
| <b>Control outputs</b>      |  |
| Input voltage (Uin OK)      | min. 5 V DC, 1 mA; max. 30 V DC, 100 mA        |
| Battery (BAT OK)            | min. 5 V DC, 1 mA; max. 30 V DC, 100 mA        |
| <b>General data</b>         |  |
| Mounting method             | DIN-rail mountable TH35-7.5/TH35-15 (EN 60715) |
| Temperature range           | -25...+45 °C                                   |
| Connection                  | Push-In spring clamp terminals, Mini-USB       |
| Dimensions H×W×D            | 123×65×143 mm                                  |