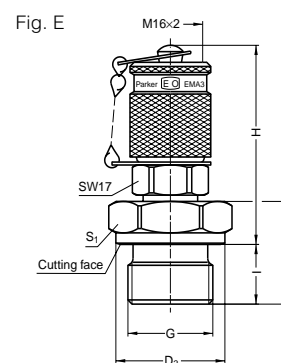
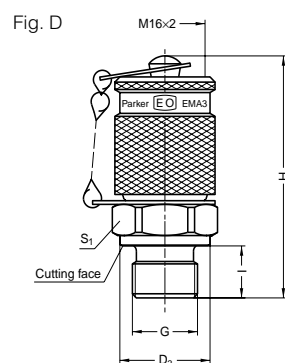
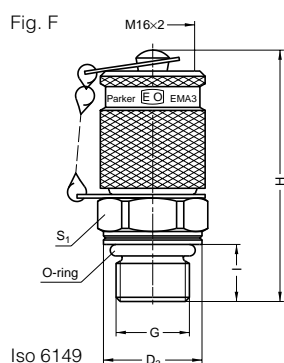
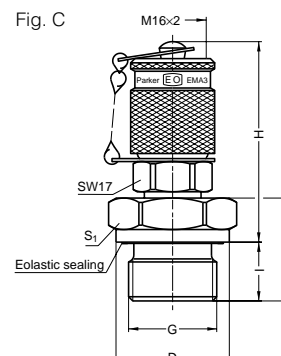
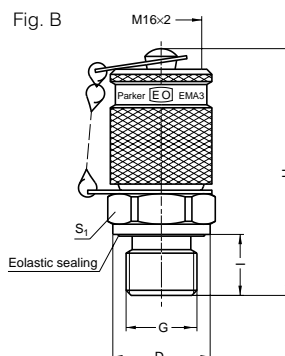
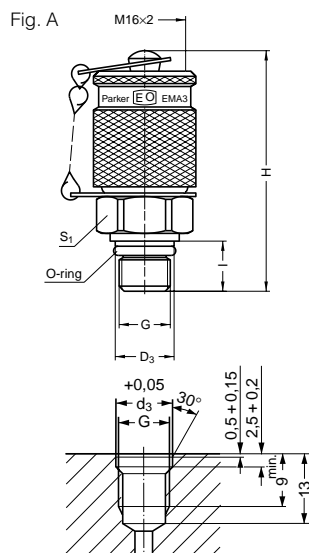


EMA 3 Test Point with threaded connection M 16x2

Male thread: BSP, metric

Sealing: O-ring, fig. A/Eolastic sealing, fig. B and C, cutting face, fig. D and E



PN (bar)	P _{max} (bar)	G	S ₁	I	L	H	D ₃	Form	Part no. Steel	Part no. stainless steel
630	700	M8x1	17	8.5		46	9.5	A	EMA3/M8x1OR	
630	700	M10x1	17	9.8		47	11.5	A	EMA3/M10x1OR	EMA3/M10OR71
630	700	M14x1.5	19	11.0		49	18.8	F	EMA3/M14x1,5ISO	EMA3/M14ISO71
400	630	M10x1	17	8.0		45	14.0	D	EMA3/M10x1	
400	630	M12x1.5	17	12.0		49	17.0	D	EMA3/M12x1,5	
400	630	M14x1.5	19	12.0		49	19.0	D	EMA3/M14x1,5	
400	630	M16x1.5	22	12.0		49	21.0	D	EMA3/M16x1,5	
400	630	G1/8	17	8.0		45	14.0	D	EMA3/1/8	
400	630	G1/4	19	12.0		49	18.0	D	EMA3/1/4	
400	630	G3/8	22	12.0		49	22.0	E	EMA3/3/8	
400	630	G1/2	27	14.0	24.5	49	26.0	E	EMA3/1/2	
630	700	G1/8	17	8.0		45	14.0	B	EMA3/1/8ED	EMA3/1/8ED71
630	700	G1/4	19	12.0		49	19.0	B	EMA3/1/4ED	EMA3/1/4ED71
630	700	G3/8	22	12.0		49	22.0	B	EMA3/3/8ED	EMA3/3/8ED71
630	700	M10x1	17	10.0		47	14.0	B	EMA3/M10x1ED	EMA3/M10ED71
630	700	M12x1.5	17	12.0		49	17.0	B	EMA3/M12x1,5ED	EMA3/M12ED71
400	630	M14x1.5	19	12.0		49	19.0	B	EMA3/M14x1,5ED	EMA3/M14ED71